

Training Programme on

RME

Reliability and Maintenance Excellence



Course Code - 1140



SELF PACED
Training



LIVE VIRTUAL
Training



PUBLIC
Training

ABOUT ARRELIC TRAINING INSTITUTE

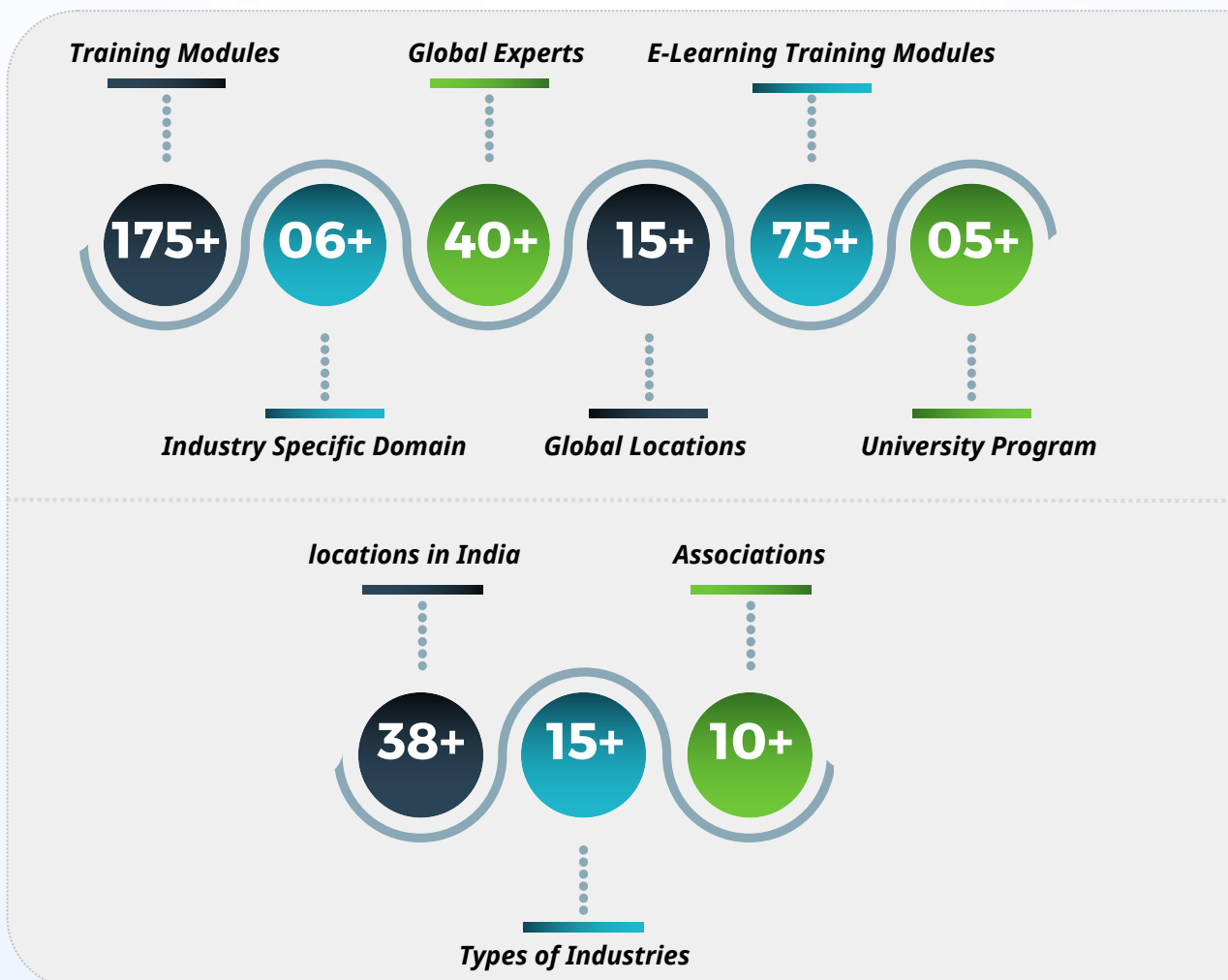
Arrellic Institute is focused to equip both Industry professionals and College graduates with the skills and knowledge required to compete globally.

Arrellic Institute provides over 75 different type of customized training programs in the field of Reliability Engineering, Asset Management, Best Practice, Operation & Maintenance, Predictive Maintenance, NDT (Non-Destructive Testing), Predictive Analytics, Quality, Risk & Safety.

Arrellic Institute conducts public trainings and workshops in 38 locations across India and 10+ International locations.

We work for Large corporate house in 15 different types of Industries ranging from Airlines, Automobiles, Cement, Defence Manufacturing, FMCG, Glass, Marine, Metals, Mining, Oil & Gas, Power, Pulp & Paper, Facility Management and Fertilizer.

ARRELIC INSTITUTE: AT A GLANCE



CLIENTS



COURSE CODE - 1140

All the logos and company names are trademarks™ or registered® trademarks of their respective holders. Use of them does not imply any affiliation with, endorsement, or sponsorship by them. The above logos and trademarks are used to help participants easily identify the companies they are from and are not intended for any commercial use.

PARTICIPANTS FROM DIFFERENT COUNTRIES



India



Saudi Arabia



USA



Australia



UAE



South Africa



Nigeria



Indonesia



Philippines



Oman



Canada



Qatar



Egypt



Singapore



Bahrain



United Kingdom



Botswana



Ghana



Pakistan



Poland



Turkey



Zambia



Zimbabwe



Angola



Congo



Finland



Greece



Kenya



Kuwait



Germany



Malaysia



New Zealand



Peru



Russia



Thailand



Azerbaijan



Burkina Faso



Ivory Coast



Spain



Fiji



France



Honduras



Ireland



Italy



Jordan



Kyrgyzstan



Kazakhstan



Macedonia



Mauritius



Maldives



Mexico



Mozambique



Norway



Slovakia



Papua New Guinea



Romania



Rwanda



Sierra Leone



Somalia



Suriname



Tanzania



Uganda



Vietnam

RUN THIS COURSE IN-HOUSE



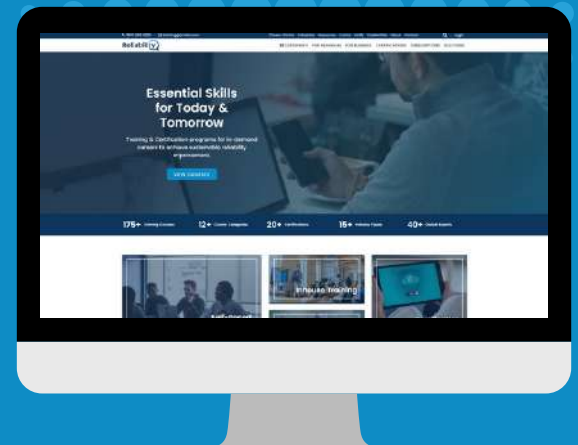
Enjoy this certified training program at your chosen location, with lower costs and a schedule that suits you best.

- Fully Customized According to your Needs
- 40+ World Class Trainer Flexibility in Choosing Trainer
- Long Term Support & Assessment of Training Effectiveness
- Train As Many Employees as per your Requirement
- Flexible, Cost Effective Minimum 30% Lower Cost
- ISO 27001:2013 Certified Highly Secured LMS Platform
- Learn Whenever, Wherever as per the Participants' Requirement & Convenience

LMS – DIGITAL PLATFORM

AI Based Virtual E-Learning **LMS** Platform for your Business

Reliability  Platform
From Arrelic



ABOUT THE TRAINING PROGRAMME

Most large plants invest hundreds of millions of dollars in capital assets. An effective management of these assets has a significant impact on both the balance sheet and profits. Reliable running of plant equipment is the foundation of achieving maximum profit. While many organizations today are beginning to realize the massive amount of untapped value hidden in plant assets,

However, until recently, maintenance was often overlooked during the corporate business planning process. With the rapid improvement of equipment technologies, varieties and the number of physical assets, higher expectations of the management for increased asset utilization combined with several internal and external challenges, Plant maintenance has evolved into a niche discipline with great expertise in the past twenty years.

ELIGIBILITY CRITERIA FOR CMRP

The CMRP exam is available to any maintenance and reliability professional, regardless of education background or work experience. Candidates interested in sitting for the CMRP must follow the guidelines as mentioned below.

- Must complete and submit the CMRP application
- Should not be convicted of a felony or any other crime of moral turpitude
- Should not sit for the exam within six (6) months of previously taking the CMRP



FOCUS ON 5 PILLARS



Business & Management

- Create/Administer Strategic Plan
- Communicate with stakeholders
- Measure Performance
- Manage Environmental Health-safety risk
- Manage organizational plant

Manufacturing Process Reliability

- Apply process improvement techniques
- Manage effects of change to processes and equipment
- Maintain processes in accordance with applicable standards and specifications

Equipment Reliability

- Determine equipment reliability expectations
- Identify improvement opportunities
- Establish strategic plan to assure reliability of existing and new equipment
- Cost-justify selected plans and implement

Organisation & Leadership

- Determine organizational requirements and analyze capability
- Develop organizational structure
- Develop personnel
- Lead and manage people

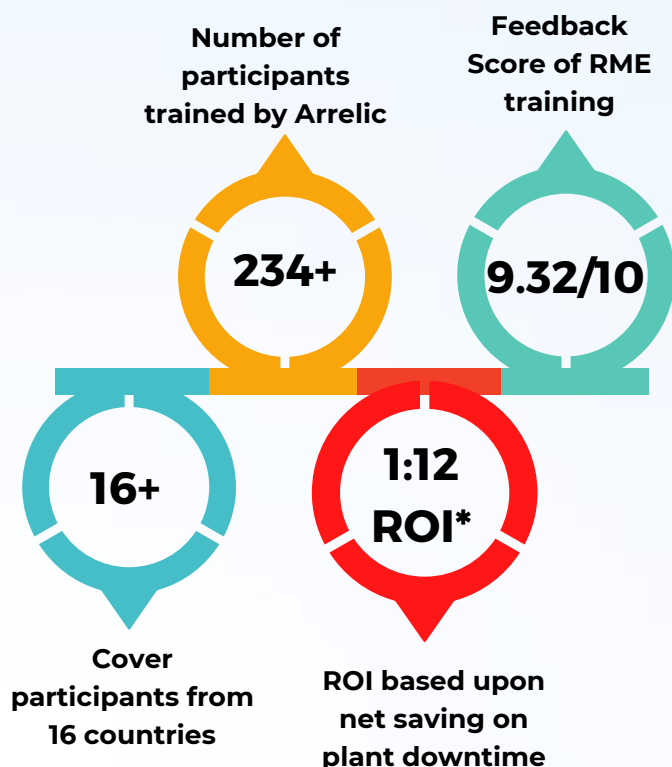
Work Management

- Develop work plans and schedule work
- Document procedure and maintain historical records
- Plan capital projects
- Use information technology

BENEFITS OF ATTENDING

BENEFITS OF ATTENDING

- Clearer direction for career development and education.
- Improved visibility and recognition within your current organization.
- Differentiated pay scales.
- Portable job skills and knowledge between plants and companies.
- Assists in job promotion & greater job effectiveness.
- Improved ability to differentiate between candidates in the hiring and promotion process.
- Improved on-the-job training and outside training effectiveness.



BENEFITS TO COMPANY

- **Selection Criteria:** In hiring & promotions.
- **Baseline Standard:** For any organization's maintenance and reliability staff.
- **Provide improvement plan / path:** What's needed to meet the standard?
- **Ensure competency of staff:** Knowledge, skills, performance.
- **Provides consistency:** Person to person, Plant to plant.
- **Increases credibility:** Better customer satisfaction, Become more competitive, More reliable plant.

BENEFITS TO INDIVIDUALS

The Survey results of 2015 have been validated as actual benefits have been realized in the past years of CMRP certification.

- **Personal:** Personal satisfaction, sense of accomplishment
- **Professional:** Recognition, credibility, & visibility
- **Financial:** Promotional ability, marketability, & compensation
- **Performance base-line:** For self, For organization, For future positions
- **Effectiveness:** Knowledge, skills, Performing, Selling proposals, ideas

LEARNING OBJECTIVES

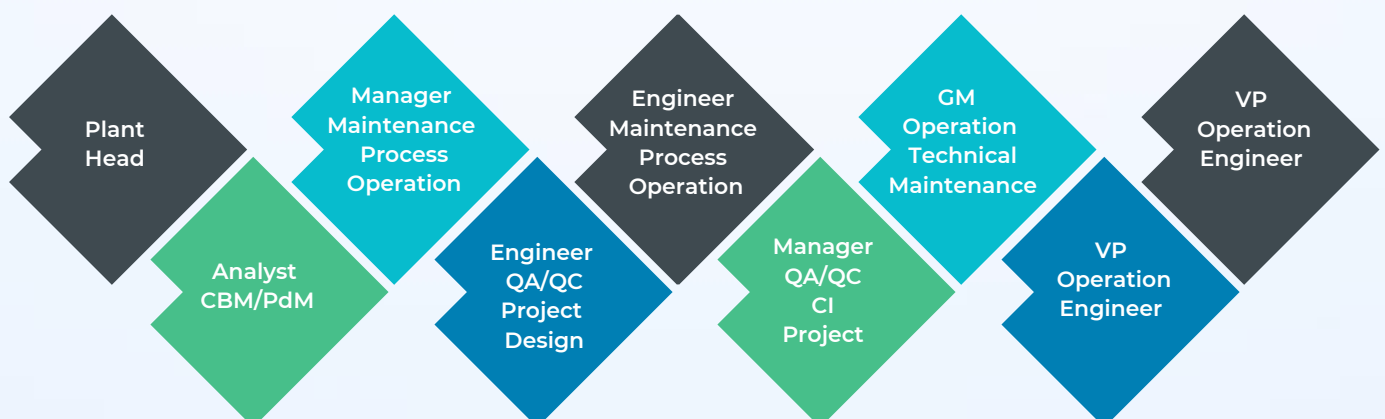
By attending this technical training on “Reliability and Maintenance Excellence” delegates will be able learn and deliver the following things:

- Basic understanding of the plant asset management and develop proactive maintenance management strategy.
- Develop an effective maintenance planning system to reduce costs, downtime and backlogs.
- Perform the critical steps in the identification of necessary maintenance work.
- Demonstrate the bottom -line benefits of maintenance planning and scheduling as a core business process.
- Analyse work requests using a risk-based approach so that only necessary work is performed.
- Achieve streamlined maintenance processes by developing a fool-proof scheduling program.
- Improve turnaround performance by applying proven best practices.
- Effectively decrease downtime by coordinating and streamlining your Maintenance Planning, scheduling and control process.
- Utilize best practice performance management to control your Maintenance Planning and Scheduling process.

WHO SHOULD ATTEND ?

The RME Training is structured for the professionals who are involving in Maintenance and Reliability Domains.

- Maintenance Section Heads;
- Maintenance Managers;
- Maintenance / Reliability Engineers;
- Maintenance Consultants;
- Production / Operations Professionals.



INDUSTRIES KEY CHALLENGES



LOW PRODUCTIVITY

Conventional use of time-based approach for maintenance does not take into consideration the way assets are being utilized, their current condition and real world operating conditions



HIGH DOWNTIME

Failure to curb unplanned downtime and lack of control over value chain processes lead to high costs , inefficiencies and poor compliance. These severely impacts the profit and industrial growth.



INADEQUATE ASSESS CONTROL

Industries lack the ability to interpret assets data and because of unavailability of proper predictive methods they are unable to predict equipment failures which leads to unplanned downtime.



HIGH MAINTENANCE COST

Increased competition, pressure to grow revenue & profit , tighter regulations, scarcity of raw material, fluctuation demand and obsolete technologies have impacted the way industries are being operated.



WASTAGE OF MATERIAL

Waste is a regrettable but unavoidable element of any process manufacturing production cycle, frequently due to poor planning or recipe or formula changes. To avoid financial losses, prevent high overhead, and improve overall efficiency, a process manufacturer's primary value is to limit the amount of material wasted.



ENVIRONMENTAL CONSCIOUSNESS

Process Manufacturers must be aware of the environmental effect for their ecologically concerned customers by producing green goods. Taking environmental awareness CSR initiative like Forestry Program to gain a positive image into the mindset of customers.

CERTIFICATION

For CMRP Certification delegates need to apply from SMRP website and pass the exam. CMRP Certification exam fees as follows

SMRP Members: \$300.00 (USD)

Non-Members: \$470.00 (USD)

WHY CERTIFICATION & CMRP ?

The Certified Maintenance & Reliability Professional (CMRP) program is the leading credential for certifying the knowledge, skills and abilities of maintenance, reliability and physical asset management professionals.

- #1 credentialing program for certifying the knowledge, skills and experience of maintenance and reliability professionals.
- ANSI (The American National Standard Institute) & SMRP (Society of Maintenance & Reliability Professional) certified.
- Exam content is all inclusive; Program is not tied to any commercial ventures – unbiased & developed by practitioners.
- CMRP certification now recognized as the standard of M&R certification by many organizations worldwide.
- It was developed to assess professionals' aptitude within the five pillars of the SMRP Body of Knowledge (BoK), which include: Business & Management, Equipment Reliability, Manufacturing Process Reliability, Organization & Leadership, and Work Management.

ABOUT SMRP, USA & CMRP

The Society for Maintenance & Reliability Professionals (SMRP) is a non profit professional society formed by practitioners to develop and promote excellence in maintenance, reliability and physical asset management while creating leaders in the profession. SMRP provides unparalleled value for individual practitioners and professionals looking to expand their knowledge and skills and build more business connections with others. SMRP is the premier asset management resource for companies looking to improve their processes and procedures.

SMRP provides ANSI-accredited certification programs to validate the skills of practitioners and give them an edge when applying for jobs in maintenance and reliability.

ABOUT COURSE



COURSE OVERVIEW

Reliability and Maintenance Excellence workshop designed to discuss and elaborate on the Society of Maintenance & Reliability Professional (SMRP) Pillars of the Body of Knowledge to help the candidates come to terms with these Pillars.

There are five pillars in the maintenance and reliability Body of Knowledge for professionals: Business and Management, Manufacturing Process Reliability, Equipment Reliability, Organization and Leadership, and Work Management.

The critical knowledge, skills and abilities under each of these pillars will be discussed in details. Candidate Guidelines for Certification and Recertification will be discussed in a group discussion to help participants to get a sense of what the exam is like. In addition, recommended readings will be covered in the workshop.



RME - TRAINING MODULES

- Introduction & CMRP Certification Exam overview
- Bok - Business & Management
- Bok - Manufacturing Process Reliability
- Bok - Equipment Reliability
- Bok - Organization & Leadership
- Bok - Work Management Process
- Asset Performance Management
- 5s & Visual Management
- TPM / ODM, OEE & TEEP
- Maintenance & Reliability Tools
- Maintenance Strategy, Bathtub Curve, PF Curve
- Predictive Maintenance
- Root Cause Failure Analysis (RCFA)
- Failure Mode Effect Analysis (FMEA)
- Workforce Management
- Maintenance Planning and Scheduling
- Benchmarking, KPI, Leading & Lagging Indicators
- Reliability Design
- Inventory Management



PROGRAM SNAPSHOT

- 04 days live sessions through Reliability Q Platform
- World Class Trainers
- Free Training Materials
- Access to Training recordings
- Batch size limited to 25 numbers
- Mock Test, Q/A, Assessment
- Certificates - RME



SUGGESTED BOOKS

BUSINESS AND MANAGEMENT

- Maintenance Strategy by Anthony Kelly
- Toyota Way by Jefery Liker

MANUFACTURING PROCESSES

- World Class Manufacturing by Richard Schonberger
- Jurans Quality Handbook by Joseph Juran
- Maintenance & Reliability Best Practices by Ramesh Gulatti

EQUIPMENT RELIABILITY

- Making Common Sense Common Practice by Ron Moore
- Gateway to World Class Maintenance by Anthony M. Smith

COURSE OUTLINE

HISTORY & CONCEPT

M01

- **Introduction**
 - ✓ Pre-Assessment
- **Definition of modern maintenance management**
 - ✓ Key terms and definitions
 - ✓ Maintenance Managers / Supervisors roles, Objectives and Maintenance concepts in the middle east and India geography
 - ✓ Developing & aligning maintenance vision and mission to corporate business objective
- **CMRP Certifications**
- **All Pillar Body of Knowledge (BoKs)**
- **Asset Maintenance Strategy Development**
 - ✓ Reliability Centered Maintenance
 - ✓ Preventive Maintenance(PM)
 - ✓ Predictive Maintenance (PdM)/Condition Monitoring

MAINTENANCE EXCELLENCE

M02

- **Maintenance Strategies**
 - ✓ Understanding of PF Curve
 - ✓ Cost of failure
 - ✓ Predicting failures
 - ✓ PdM program development
- **Introduction to predictive maintenance**
 - ✓ CBM/PdM Technologies
 - ✓ Vibration Analysis
 - ✓ IR-Thermography Planning & Scheduling
 - ✓ Oil Analysis
 - ✓ Wear Particle Analysis
 - ✓ Mechanical Ultrasound
 - ✓ Motor Circuit Signature Analysis
 - ✓ Non Destructive Testing (NDT)
- **Maintenance and Reliability Tools**
 - ✓ Root Cause Analysis
 - ✓ Failure Mode Effect Analysis
 - ✓ Six Sigma, Lean Tools
 - ✓ Pareto Analysis – 80/20 rules

COURSE CODE - 1140

COURSE OUTLINE

WORK PROCESS MANAGEMENT

M03

- Maintenance Work Process Management
 - ✓ Work identification
 - ✓ Work prioritization / classification
 - ✓ Planning
 - ✓ Scheduling
 - ✓ Execution and closeout
- Workforce Management
 - ✓ Employee Life Cycle
 - ✓ Communication Strategy
 - ✓ Communication Process
 - ✓ Resource Management

RELIABILITY EXCELLENCE

M04

- Reliability Design
 - ✓ Reliability Block Diagram
 - ✓ The Bathtub curve
 - ✓ Asset Life Cycle cost
- Reliability Centred Maintenance
 - ✓ RCM Principle and Processes, Cause and Implementation
- Best Practice & Managing Performance
 - ✓ Leading and Lagging Indicators
- Benchmarking in Maintenance
- Total productive Maintenance
 - ✓ Operator Driven Maintenance or Reliability (ODM/ODR)
 - ✓ TPM Pillars / OEE Calculation
- Lean Manufacturing in maintenance

INVENTORY MANAGEMENT

M05

- Inventory management
 - ✓ Types of Inventory
 - ✓ MRO
 - ✓ Optimizing Tools and Techniques
- Types of Abnormality
- Post Assessment
- Overall program review

COURSE CODE - 1140

WORLD CLASS TRAINER

HUSSAIN AL-ALI, CAMA, CMRP

QUALIFICATION	Graduate in Mechanical Engineering
EXPERIENCE	37+
INDUSTRIES	Metal, Oil & Gas, Petrochemicals, Consulting
BASE LOCATION	Manama, Bahrain [Bahraini Citizenship]



Played key roles in overseeing Aluminum Bahrain (ALBA) grow from a capacity of 120,000 MTPA to one of the largest aluminum smelters in the world with a capacity in excess of 900,000 MTPA. A member of the team who implemented the highly acclaimed and successful "EAST" Project at SHARQ Petrochemical Company, in Jubail, KSA, for the implementation of their Asset Management Work Process (AMWP). Implemented the AMWP program at Advanced Petrochemical Company in Jubail, KSA.

Chairman of the Education Committee in GSMR, Bahrain.

DOMAIN KNOWLEDGE

Planning & Scheduling

Maintenance Planning and Scheduling, Asset Management Work Process, Reliability Readiness Assessment, Work Management, Planning and Scheduling Strategy Development

Asset Management

Acquainted with PAS – 55, ISO – 55000 standards, Asset Performance Management Modules, Integrating Asset Performance Management with other Management Initiatives, Asset Management Landscape.

Reliability Engineering

Reliability Centered Maintenance, CBM/PdM Tools- Vibration Analysis, IR – Thermography, Product life Cycle, FMEA, FTA, Reliability Modelling, Reliability Block Diagram, Reliability Prediction, Reliability Testing – ALT, HALT, PRAT, Reliability Growth Analysis, Weibull Analysis, FRACAS, Defect Elimination, Reliability Readiness Assessment, Work Management

WORLD CLASS TRAINER

DEEPAK KUMAR SAHOO, CRL, CMRP

QUALIFICATION	MS (Reliability Engineering), PG in Engineering Management, B. Tech (Mech)
EXPERIENCE	13+
INDUSTRIES	Petrochemicals, Aerospace, Consulting
BASE LOCATION	Kolkata, India



Worked in multiple industries such as Petrochemicals, Steel, Aerospace and consulting domain in Asia Pacific, Middle-East, Eastern Europe and North Africa regions. Published white papers and presented seminars in various international forum. Filed 7 patents on asset management and online condition monitoring.

DOMAIN KNOWLEDGE

Operational Excellence:

Total Productive Maintenance, Lean Manufacturing, Six Sigma, Balance Score Card, BCG Matrix, Value Stream Mapping, Loss Cost Matrix, KAIZEN, SMED, KMI/KPI/KAI Setup, Business Strategy, Maintenance Optimization Strategy, Statistical Process Control, EBITDA Growth Analysis, OEE/TEEP Improvement and GAP Analysis.

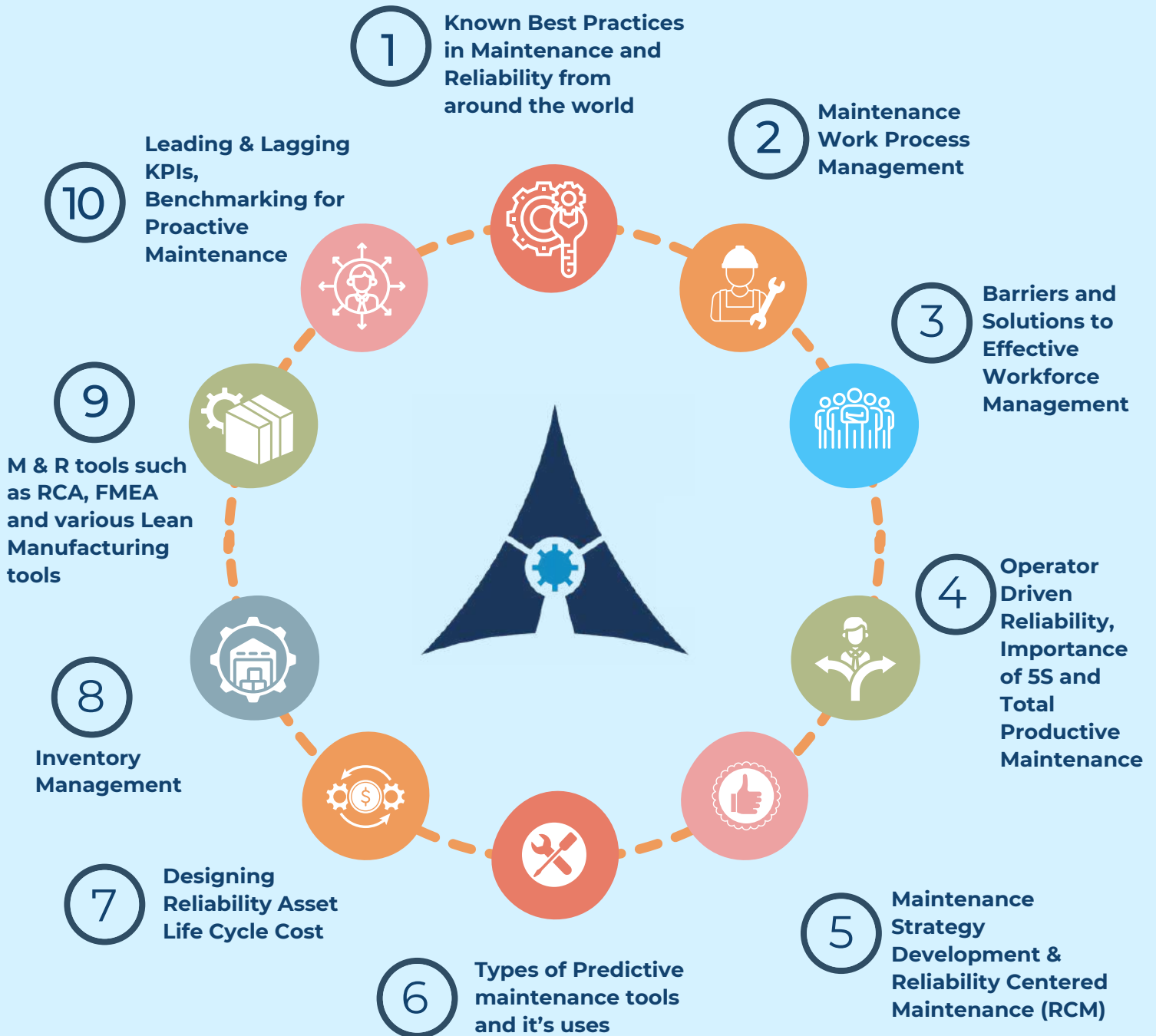
Asset Management

Acquainted with PAS – 55, ISO – 55000 standards, Asset Performance Management Modules, Integrating Asset Performance Management with other Management Initiatives, Asset Management Landscape.

Reliability Engineering

Reliability Centered Maintenance, CBM/PdM Tools- Vibration Analysis, IR – Thermography, Product life Cycle, FMEA, FTA, Reliability Modelling, Reliability Block Diagram, Reliability Prediction, Reliability Testing – ALT, HALT, PRAT, Reliability Growth Analysis, Weibull Analysis, FRACAS, Defect Elimination, Reliability Readiness Assessment, Work Management

10 KEY TAKEAWAY



TESTIMONIALS

BK

Bahebolom K W



It is an eye-opening course, which I recommend to all engineers and people who want to play a great role in increasing productivity, efficiency, quality, safety, and cost-effective management system in their organizations.



MS

Manas Sundar N.



Absolutely a valuable course, designed well & been delivered in a easy to understand way. Thanks .

LS

Luc S.



Excellent course, every maintenance manager should know about these concept.

MD

Maria D.



Insightful, interesting area of knowledge for career shift.

AY

Amine Y.



New method, concrete, very educational and easy to assimilate.

JO

Jerry O.



The course is full of usable knowledge !!

JD

Julius D. W.



I am thoroughly enjoying the Training series and I am learning a lot. I am stopping and pausing the video and taking notes. I am looking at some of the other courses offered by him because how he has structured the training makes it very easy to follow along.

RME TRAINING PROGRAM



SELF - PACED E-LEARNING

USD

349

INR
29,500

(GST INCLUSIVE)

REGISTRATION INCLUDES

- Comprehensive Learning Kit.
- Pre-Course Learning.
- 20+ hours of on-demand video.
- Unlimited access to recorded training videos.
- 02 hours Q/A session with Training Expert.
- Assistance with the registration process.
- 6 full-length mock exams & Practice Tests
- 660+ numbers of qualitative, agile & predictable questions.
- RME - Reliability and Maintenance Excellence Certificate from APDI

CMRP CERTIFICATION EXAM COST IS NOT INCLUDED.

SMRP Members: \$300.00 (USD) Non-Members: \$470.00 (USD)



WAY TO REGISTER

tinyurl.com/GForm1140

CONTACT:

+91 – 993 726 5750

+1 – 408 709 4250

<https://wa.me/919937265750>

<https://wa.me/14087094250>

training@arrelic.com

BANK TRANSFER

Bank Name :	ARRELIC RELIABILITY PRIVATE LIMITED
Account Number :	031 - 040835 - 001
Type :	CURRENT ACCOUNT
Bank :	HSBC
Branch :	31 BBD Bagh, Dalhousie Square, Kolkata, India - 700001
IFSC Code :	HSBC0700004
Bank Code/Swift Code :	HSBCINBB
MICR :	HSBC0700004

“ Many employers use the CMRP certification as a prerequisite for hiring to ensure they bring the most talented employees into their team ”



LIVE & PUBLIC TRAINING

USD
599

INR
50,150
(GST INCLUSIVE)



THIS COURSE INCLUDES

- Entry for 04 days Online Instructor Led Training
- Comprehensive Learning Kit.
- Pre-Course Learning.
- 20+ hours of on-demand video.
- Unlimited access to recorded training videos.
- Assistance with the registration process.
- 6 full-length mock exams & Practice Tests
- 660+ numbers of qualitative, agile & predictable questions.
- RME - Reliability and Maintenance Excellence Certificate from APDI

CMRP CERTIFICATION EXAM COST IS NOT INCLUDED.
SMRP Members: \$300.00 (USD) Non-Members: \$470.00 (USD)

SCHEDULE FOR PUBLIC TRAINING

DATE	LOCATIONS
2022 NOV 22 - 25	ONLINE
2023 JAN 16 -19	KOLKATA, INDIA
2023 MAY 23 -26	ONLINE
2023 JULY 17 - 20	HYDERABAD, INDIA
2023 SEP 20- 23	DELHI
2023 NOV 20 - 23	ONLINE

All classes starts at 10.30 AM | GMT+ 5.30

FOR LIVE TRAINING SCHEDULE

DATE & TIME FOR THE YEAR 2022-23 FOR WEEKEND BATCH

SATURDAY BATCH STARTS ON

2022 DEC 03	Training will continue on every Saturday after the batch start at 10:30 AM to 5:30 PM. There will be 01 hour break.
2023 FEB 04	
2023 MAY 06	
2023 JUL 08	
2023 SEP 09	
2023 NOV 04	

SUNDAY BATCH STARTS ON

2022 DEC 04	Training will continue on every Sunday after the batch start at 10:30 AM to 5:30 PM. There will be 01 hour break.
2023 FEB 05	
2023 MAY 07	
2023 JUL 02	
2023 SEP 03	
2023 NOV 05	

BANK TRANSFER

Bank Name :	ARRELIC RELIABILITY PRIVATE LIMITED
Account Number :	031 - 040835 - 001
Type :	CURRENT ACCOUNT
Bank :	HSBC
Branch :	31 BBD Bagh, Dalhousie Square, Kolkata, India - 700001
IFSC Code :	HSBC0700004
Bank Code/Swift Code :	HSBCINBB
MICR :	HSBC0700004

ARRELIC CONTACTS



DEEPAK KUMAR SAHOO
deepak@arrellic.com
training@arrellic.com
+91 - 993 726 5750
+1 - 408 709 4250

REGISTER: tinyurl.com/GForm1140

REGISTRATION

COURSE NAME

Reliability & Maintenance Excellence

TRAINER NAME

HUSSAIN AL-ALI, CAMA, CMRP

Deepak Kumar Sahoo, CRL, CMRP

DURATION: 4 Days

LOCATION: Live Virtual Training

DATE: _____

CLIENT IDENTIFICATION DETAILS

(PLEASE COMPLETE FORM IN CAPITAL LETTERS)

NAME: _____

JOB TITLE: _____

EMAIL: _____

MOBILE: _____

ADDRESS: _____

COMPANY/ORGANISATION DETAILS

COMPANY NAME: _____

LOCATION: _____

ADDRESS: _____

INDUSTRY: _____

EMAIL: _____

PHONE: _____

WEBSITE: _____

ACCEPTANCE OF TRAINING CONTRACT & TERMS & CONDITIONS:

I hereby declare I accepted the training contract and terms & conditions.

SIGNATURE: _____

TRAINING TERMS & CONDITIONS

1. PAYMENT TERMS: Arrelic Reliability Private Limited (hereinafter as "Arrelic") requires 100% payment of the full amount upon receipt of the invoice. Arrelic reserves the right to refuse entry to any client who does not pay the invoice in full and on time. The registration fee does not include travel, hotel accommodation, transfers or insurance.

2. HOTEL ACCOMMODATION: Hotel accommodation is not included in the registration fee. A reduced rate or special discounted rates are available to the participants at the hotel hosting the event.

3. CANCELLATION BY CLIENT: The client has the right to cancel his/her participation in the event. Cancellation must be received by Arrelic in writing, either by mail or fax. If the client cancels with more than one month's advance notice before the start of the event, Arrelic shall be entitled to retain and charge 50% of the amount payable for participation in the event. If the client cancels with one month's (or less) advance notice, or fails to attend the event, then the client shall not be entitled to any refund. Failure to attend an event shall not excuse a client from owing the full amount of the registration fee. A copy of the training notes from the event will be sent to the client after the event is over in case of cancellation by the client.

4. CANCELLATION BY ARRELIC: While every reasonable effort is made to adhere to the advertised program, circumstances can arise which may cause changes in the program, including but not limited to changes in the content, date(s), location or venue, or special features of the planned event. Such circumstances include but are not limited to acts of terrorism, war, extreme weather conditions, compliance with government requests, orders and legal requirements, failure of third party suppliers to timely deliver, and failure to register the minimum target amount of attendees for a given event. Arrelic reserves the right to change the content, date(s), location or venue and/ or special features of an event, to merge the event with another event, or to postpone it or cancel it entirely as appropriate under the circumstances. Client agrees that Arrelic shall not be liable for any cost, damage or expense which may be incurred by client as a consequence of the event being so changed, merged, postponed or cancelled and client agrees to hold Arrelic harmless and to indemnify Arrelic in case of liability caused by any such changes, mergers, postponements or cancellations.

5. GOVERNING LAW: This Agreement shall be governed in all respects by the laws of the Indian government. Any disputes arising out of this contract shall be brought before the courts of the India situated in Bhubaneswar, India at its sole discretion.

6. GST: GST will be charged at the rate of 18% or at actual based on what is prevailing at the time of Invoice would be extra.

7. INTELLECTUAL PROPERTY RIGHTS: Arrelic retains ownership to its intellectual properties such as patents, trademarks, training materials, IT software's etc. Participants should not share the training materials such as presentations, handouts and assessment questionnaires to any one.

RELATED COURSE

CODE - 6250



MAINTENANCE PLANNING & SCHEDULING (MPS) - ADVANCE

Training Hours: 24 Hours | 03 Days

Training Level: Sr. Management and Mid Level

Certification Bodies : Arrelic Professional Development Institute

Self-Paced E-Learning Mode: USD 199.99

Live Virtual / Online Mode: USD 499.99

RELIABILITY CENTERED MAINTENANCE (RCM) - OVERVIEW

Training Hours: 16 Hours | 02 Days

Training Level: Sr. Management and Mid Level

Certification Bodies : Arrelic Professional Development Institute

Self-Paced E-Learning Mode: USD 124.99

Live Virtual / Online Mode: USD 249.99



CODE - 1320

CODE - 2400



ASSET PERFORMANCE MANAGEMENT (APM)

Training Hours: 24 Hours | 03 Days

Training Level: Sr. Management and Mid Level

Certification Bodies : Arrelic Professional Development Institute

Self-Paced E-Learning Mode: USD 149.99

Live Virtual / Online Mode: USD 399.99

ADVANCE MAINTENANCE AND RELIABILITY MANAGEMENT (AMRM)

Training Hours: 32 Hours | 04 Days

Training Level: Sr. Management and Mid Level

Certification Bodies : Arrelic Professional Development Institute

Self-Paced E-Learning Mode: USD 149.99

Live Virtual / Online Mode: USD 399.99



CODE - 1220

CODE - 2410



ASSET INTEGRITY MANAGEMENT (AIM)

Training Hours: 24 Hours | 03 Days

Training Level: Sr. Management and Mid Level

Certification Bodies : Arrelic Professional Development Institute

Self-Paced E-Learning Mode: USD 149.99

Live Virtual / Online Mode: USD 399.99

INTRODUCTION TO PREDICTIVE MAINTENANCE (PDM/CBM)

Training Hours: 24 Hours | 03 Days

Training Level: Sr. Management and Mid Level

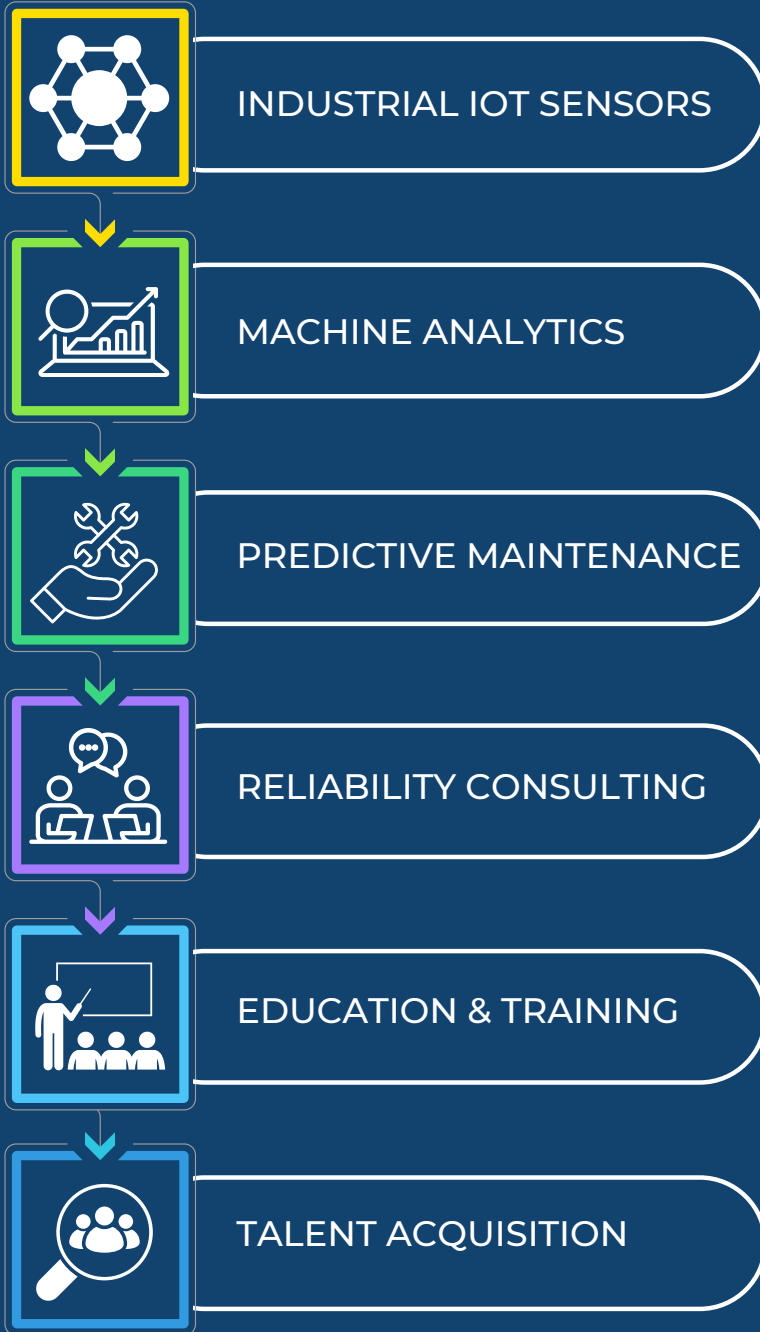
Certification Bodies : Arrelic Professional Development Institute

Self-Paced E-Learning Mode: USD 149.99

Live Virtual / Online Mode: USD 399.99



CODE - 5005



arrelic.com

info@arrelic.com / training@arrelic.com

1800 890 6250 / 1800 889 6350

LEI: 984500A013C40F436C26

306, Webel Tower - II, BN-9, Sector V, Salt Lake,
Bidhannagar, Kolkata, India - 700091

©2022 ARRELIC RELIABILITY PRIVATE LIMITED • ALL RIGHTS RESERVED

